

AGROMETEOROLOGICAL BULLETIN

Doc No: TEA 3/3/7/2 F-004

Revision No: 1

Effective Date: 01.07.2017

Page No: 1 of 5

Approved by:



REPORTING PERIOD:
01 – 10 JANUARY 2025



ISSUE No.: 10

SEASON: 2024/25

RELEASED: 15/01/2025

CONTENTS

CONTENTS	1
HIGHLIGHTS	1
RAINFALL AND TEMPERATURES	2
RAINFALL	2
TEMPERATURES	3
MAIZE AND OTHER CROPS.....	3
MAIZE CROP STAGE AND CONDITION..	3
OTHER CROPS	3
CURRENT FARMING ACTIVITY	3
LIVESTOCK AND PASTURES	4
WATER SITUATION	4
MEDIUM-TERM OUTLOOK	4
RAINFALL	4
TEMPERATURE.....	4
SOIL MOISTURE	4
WIND SPEED	4

HIGHLIGHTS

- **Reduced rainfall observed...**
- **Good vegetation condition...**
- **Weeding farming activities...**
- **An increase in rainfall is anticipated...**
- **Cool to warm temperatures forecasted...**
- **Increase in soil moisture expected...**

Compiled and Issued by: Agrometeorological Unit,

Swaziland Meteorological Service, Ministry of Tourism and Environmental Affairs.

Box 2652, Mbabane, Swaziland. ☎ (+268) 2404 8859 / 2404 6274. Fax: 2404 1530

E-mail: dudu@swazimet.gov.sz

AGROMETEOROLOGICAL BULLETIN

Doc No: TEA 3/3/7/2 F-004

Revision No: 1

Effective Date: 01.07.2017

Page No: 2 of 5

Approved by:

RAINFALL AND TEMPERATURES

RAINFALL

Much above average rainfall was observed in the 1st dekad of January 2025 (**Figure 1**) and (**Map 1**).

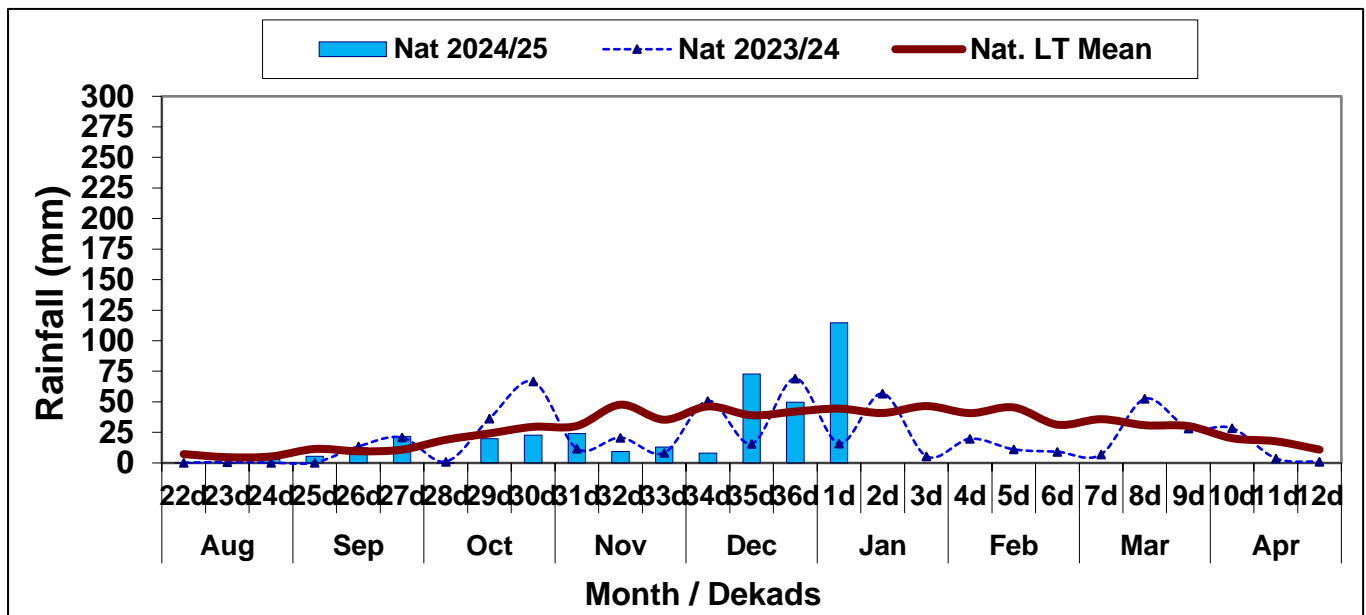
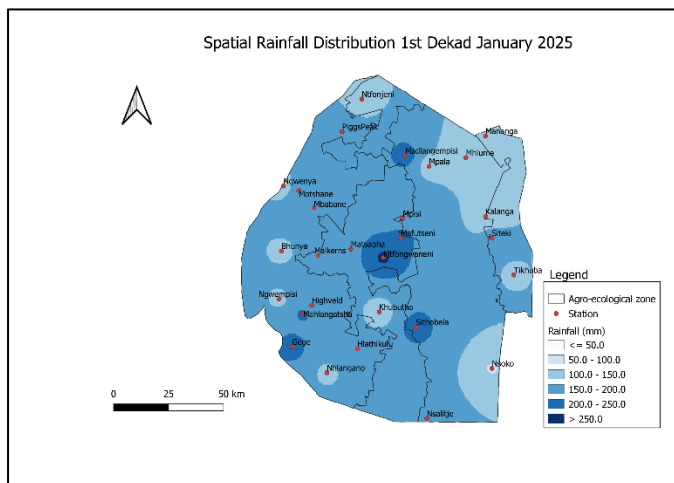
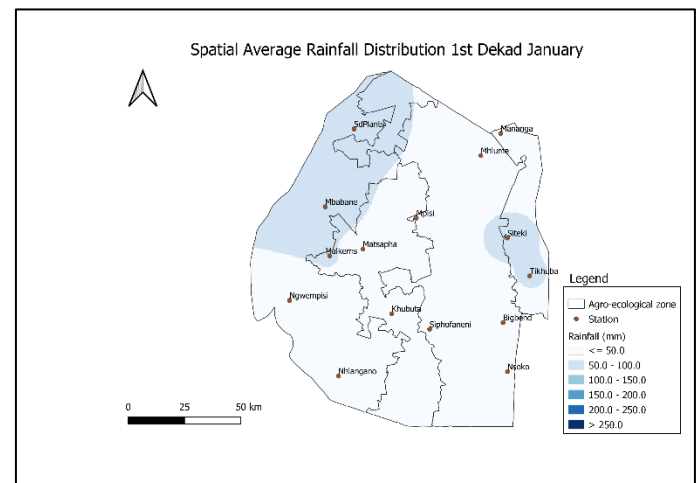


Figure 1: Rainfall distribution 1st dekad January 2025



Map 1: Spatial rainfall distribution 1st dekad January 2025



Map 2: Spatial Average Rainfall distribution 1st dekad January

Compiled and Issued by: Agrometeorological Unit,

Swaziland Meteorological Service, Ministry of Tourism and Environmental Affairs.

Box 2652, Mbabane, Swaziland. ☎ (+268) 2404 8859 / 2404 6274. 📠 Fax: 2404 1530

E-mail: dudu@swazimet.gov.sz

AGROMETEOROLOGICAL BULLETIN

Doc No: TEA 3/3/7/2 F-004

Revision No: 1

Effective Date: 01.07.2017

Page No: 3 of 5

Approved by:

All the Agroecological zones observed much above normal rainfall (**Table 1**).

Table 1: Rainfall (mm) 1st dekad January 2025

	HV	MV	LV	LP
2023/24	30	12	5	12
Average	61	40	31	55
2024/25	150	161	124	154
Anomaly	89	121	93	98

TEMPERATURES

Cool to warm temperatures generally prevailed during the reporting period (**Figure 2**) and (**Figure 3**).

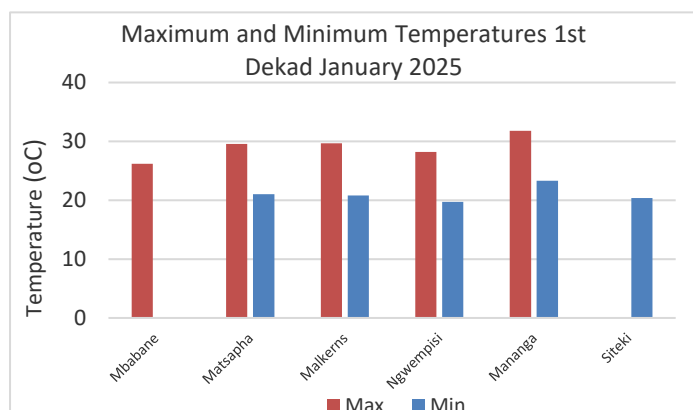


Figure 2: Maximum and Minimum temperature 1st dekad of January 2025

MAIZE AND OTHER CROPS

MAIZE CROP STAGE AND CONDITION

The Agriculture Stress Index indicates that croplands are not experiencing water stress.

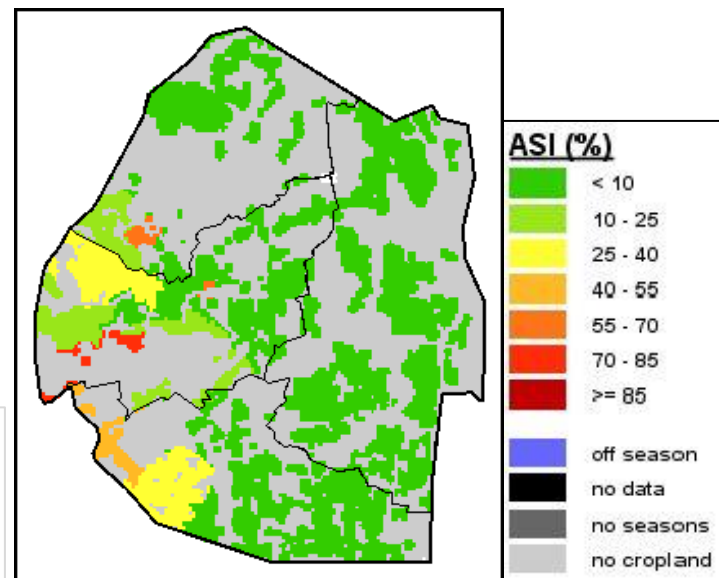


Image 1: Agriculture Stress Index 1st dekad January 2025
Source: FAO-GIEWS

OTHER CROPS

Farmers are encouraged to plant legumes, such as Groundnuts for Middleveld, Lubombo plateau and Lowveld. Varieties like Natal common and ICG 221 (Spanish) are early-maturing and can still be planted.

CURRENT FARMING ACTIVITY

Most farmers are weeding their maize crops and have already planted some legumes, such as, Jugo beans at very low scales.

Compiled and Issued by: Agrometeorological Unit,

Swaziland Meteorological Service, Ministry of Tourism and Environmental Affairs.

Box 2652, Mbabane, Swaziland. ☎ (+268) 2404 8859 / 2404 6274. Fax: 2404 1530

E-mail: dudu@swazimet.gov.sz

AGROMETEOROLOGICAL BULLETIN

Doc No: TEA 3/3/7/2 F-004

Revision No: 1

Effective Date: 01.07.2017

Page No: 4 of 5

Approved by:

LIVESTOCK AND PASTURES

Livestock is in good condition as rangelands are reported to be in good condition.

WATER SITUATION

Most dam reservoirs are reported to be at full capacities.

MEDIUM-TERM OUTLOOK

RAINFALL

Normal rainfall is expected in the outlook period.

TEMPERATURE

Cool to warm temperatures are anticipated in the outlook period.

SOIL MOISTURE

An increase in soil moisture is expected in the outlook period.


WIND SPEED

Wind will generally be light to moderate in the outlook period

NB: Outlook period is ten days from date of issue

Compiled and Issued by: Agrometeorological Unit,

Swaziland Meteorological Service, Ministry of Tourism and Environmental Affairs.

Box 2652, Mbabane, Swaziland.  (+268) 2404 8859 / 2404 6274. Fax: 2404 1530

E-mail: dudu@swazimet.gov.sz

AGROMETEOROLOGICAL BULLETIN

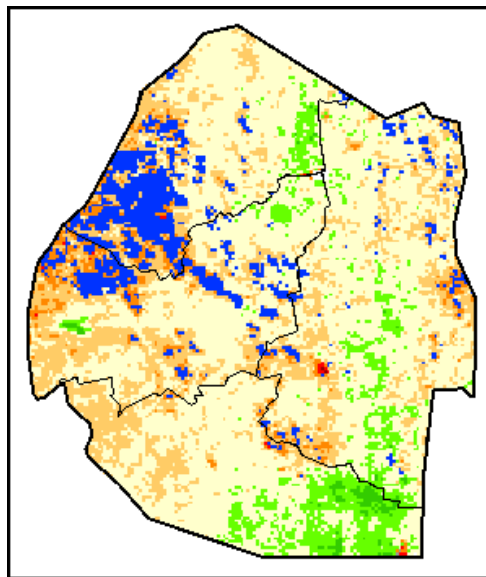
Doc No: TEA 3/3/7/2 F-004

Revision No: 1

Effective Date: 01.07.2017

Page No: 5 of 5

Approved by:



Legend

Difference to LTA

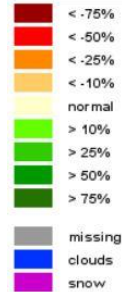
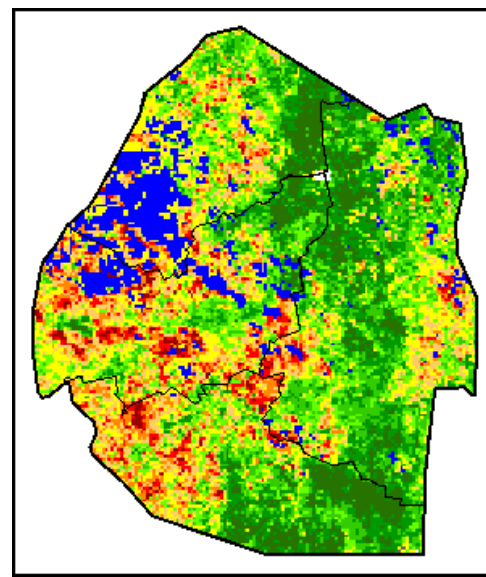


Image 2: Normalized Difference Vegetation Index (NDVI) Anomaly (1st Dekad January 2025)
Source: FAO-GIEWS



Legend

VHI

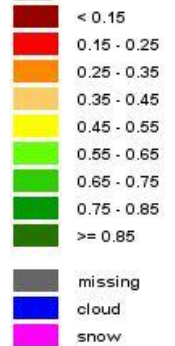


Image 3: Vegetation Health Index (VHI) (1st Dekad January 2025)
Source: FAO-GIEWS